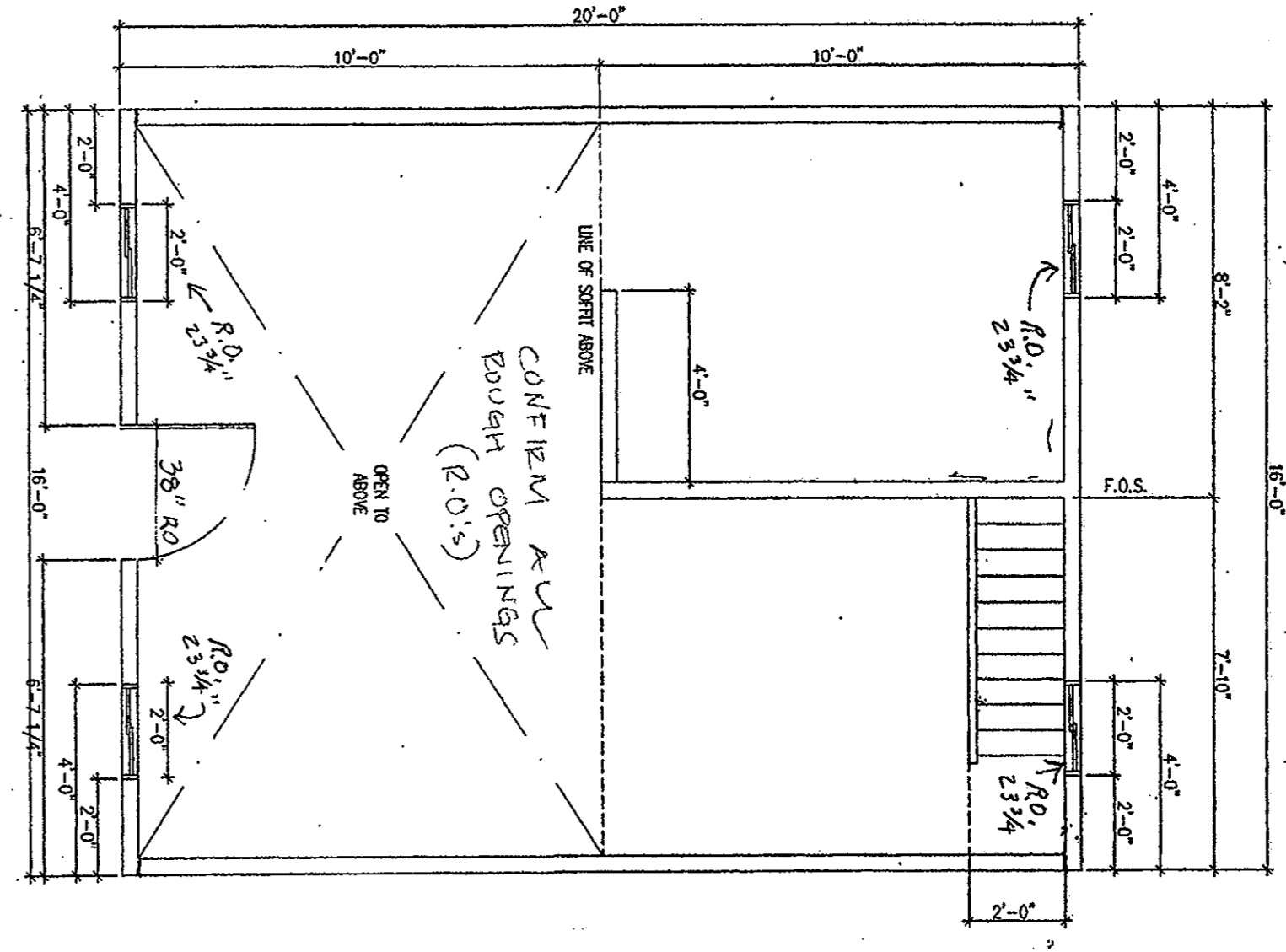
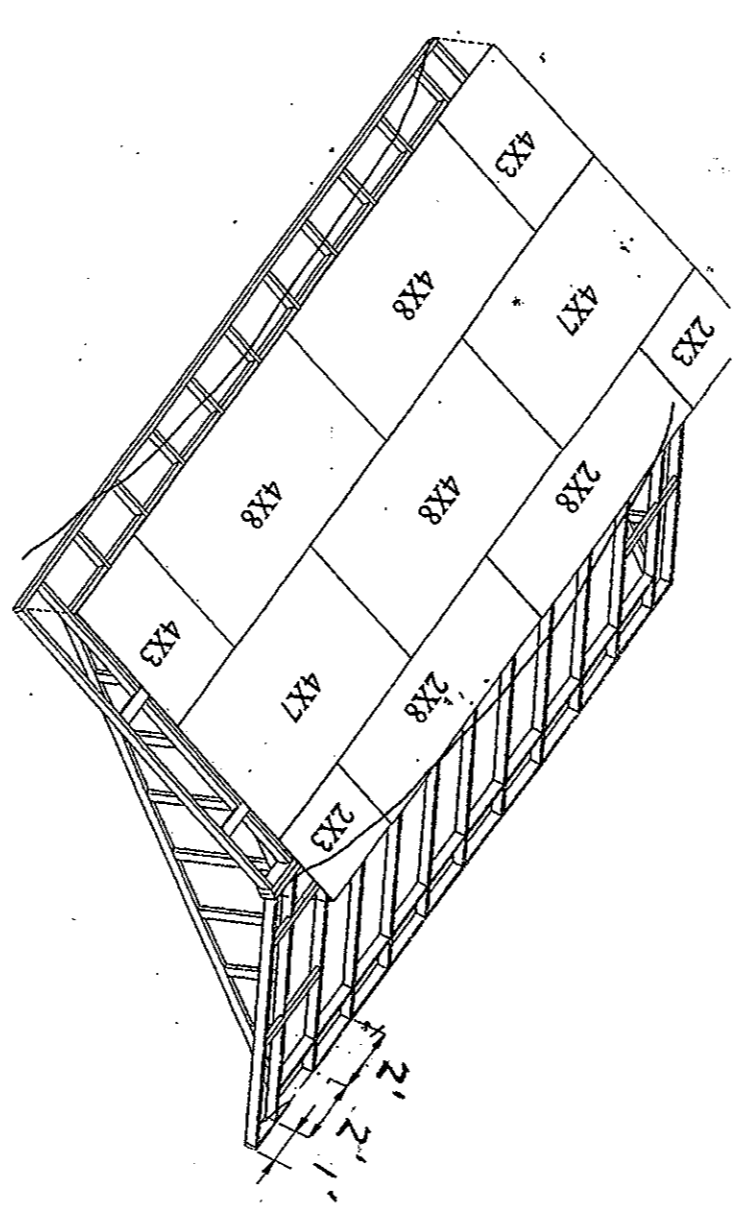


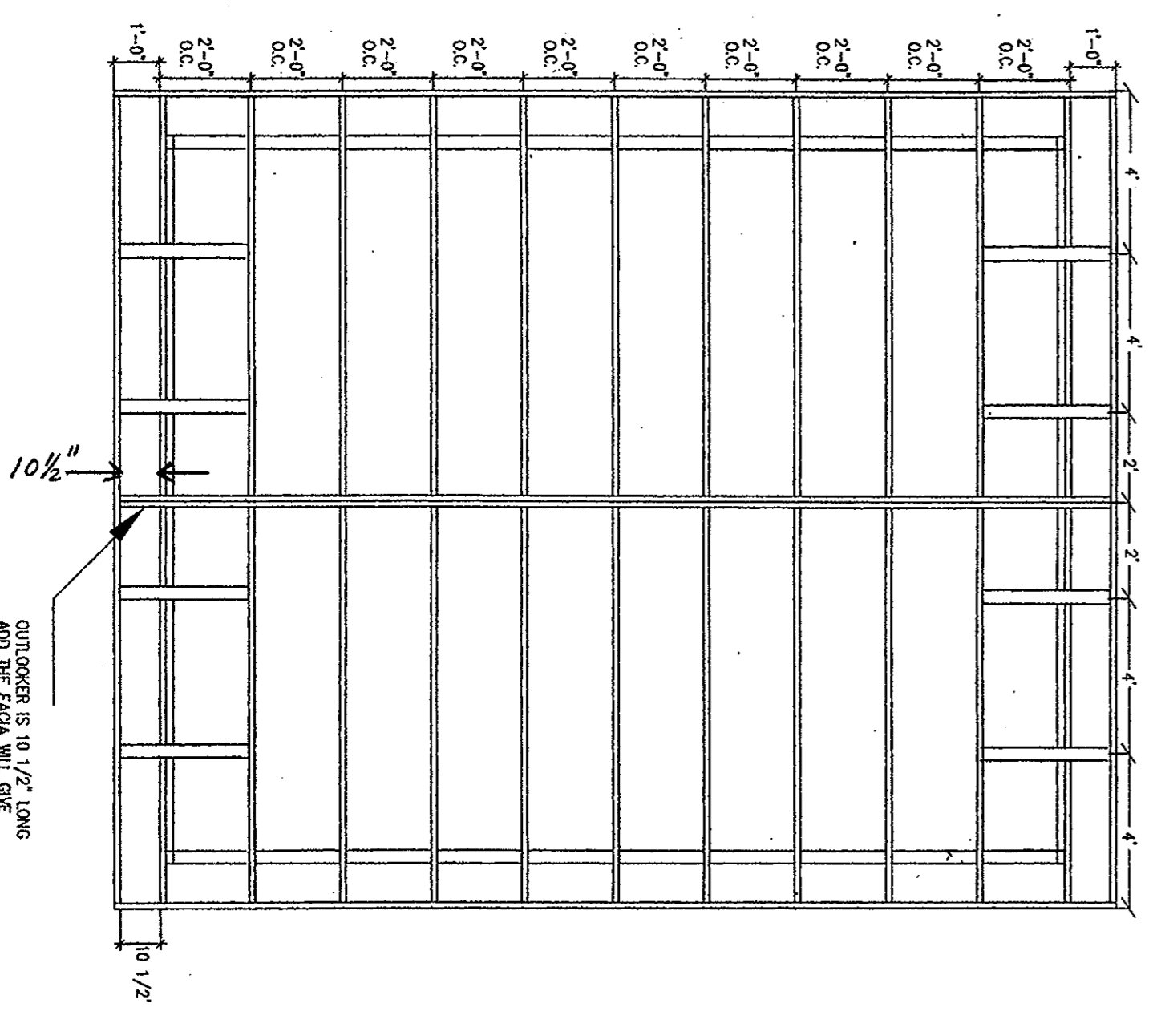
2. ISO INTERIOR WALL



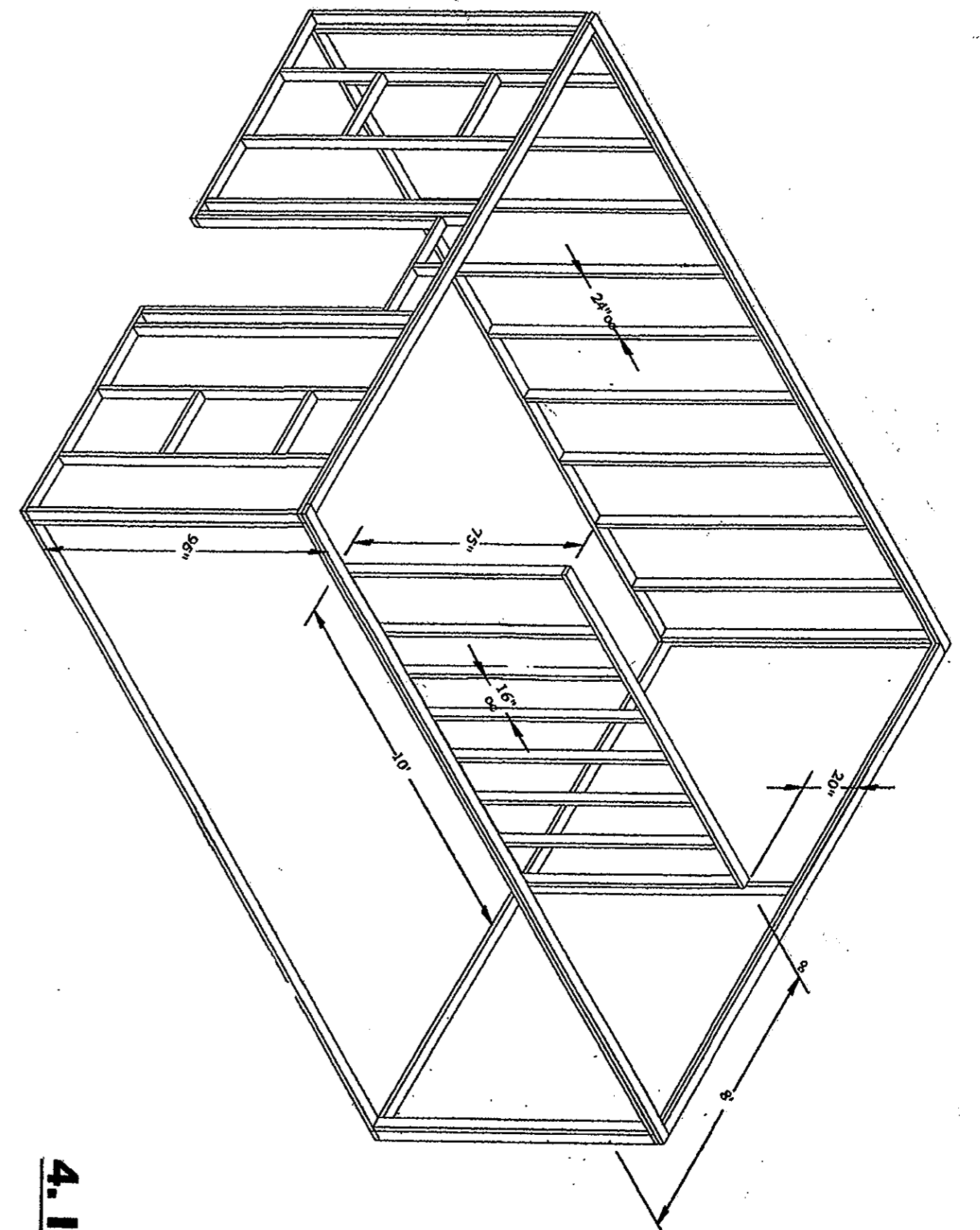
1. FLOOR PLAN



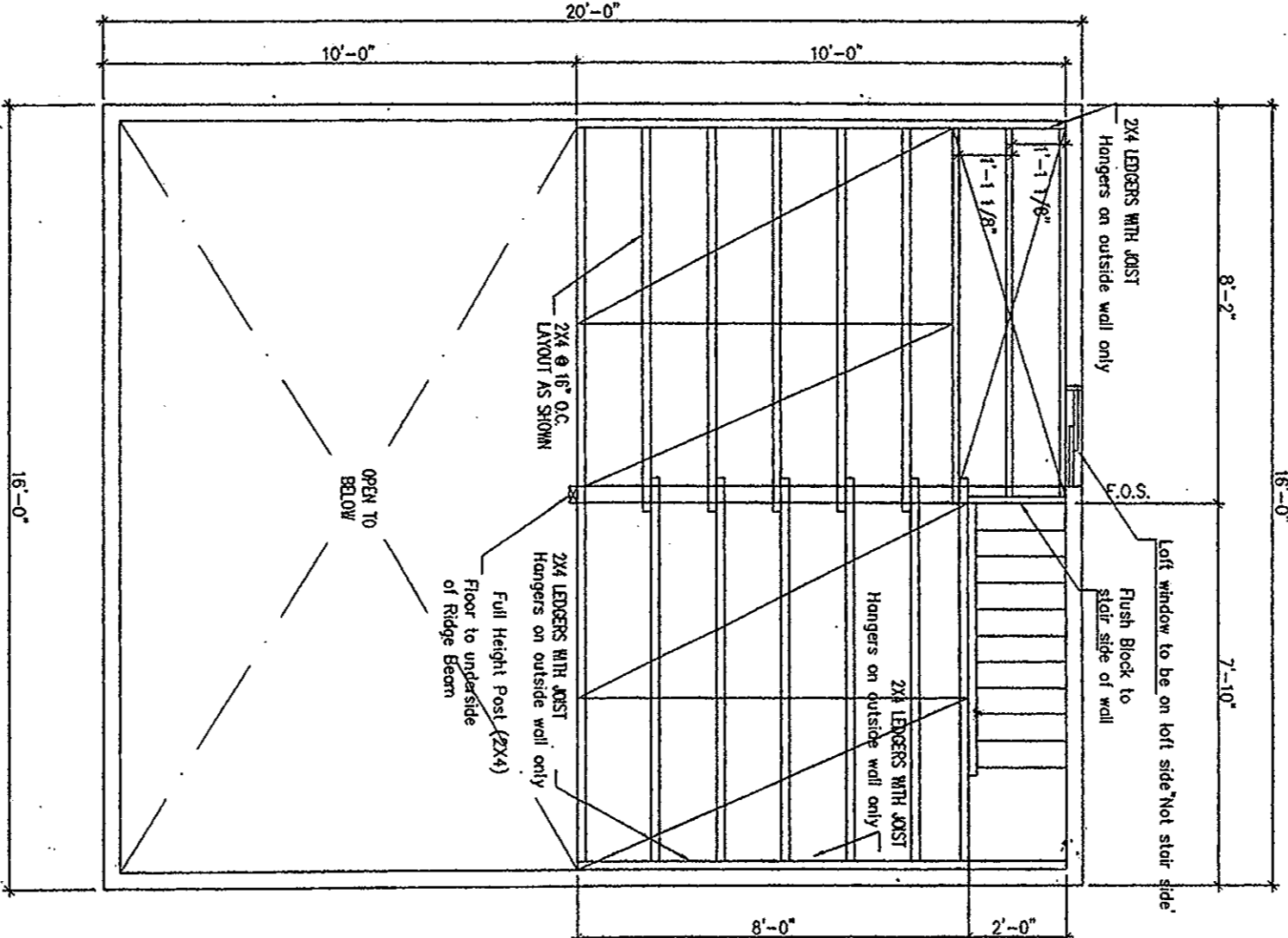
10. ROOF SHEATHING



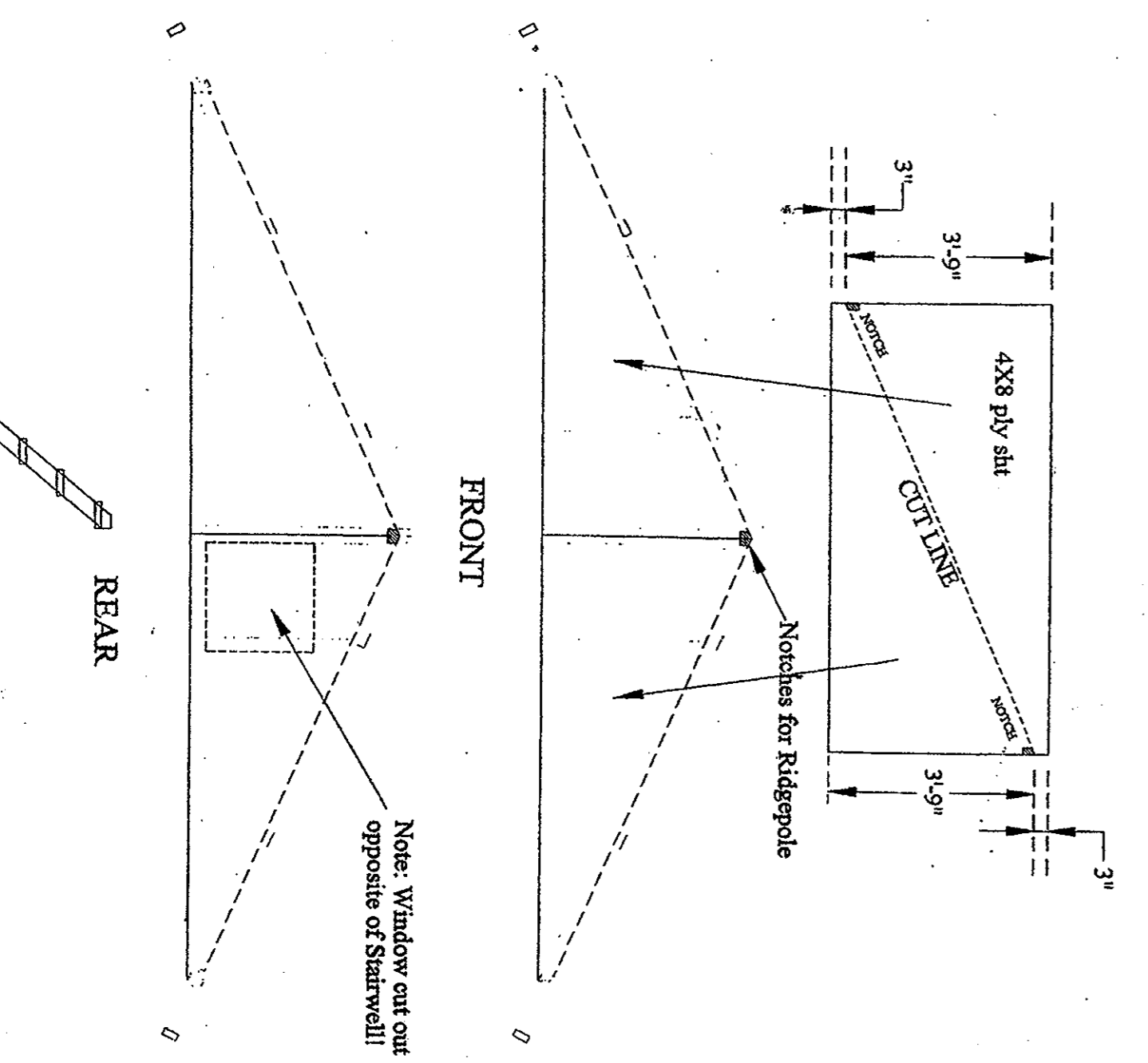
11. ROOF FRAMING PLAN



3. ISO FRAMING PLAN

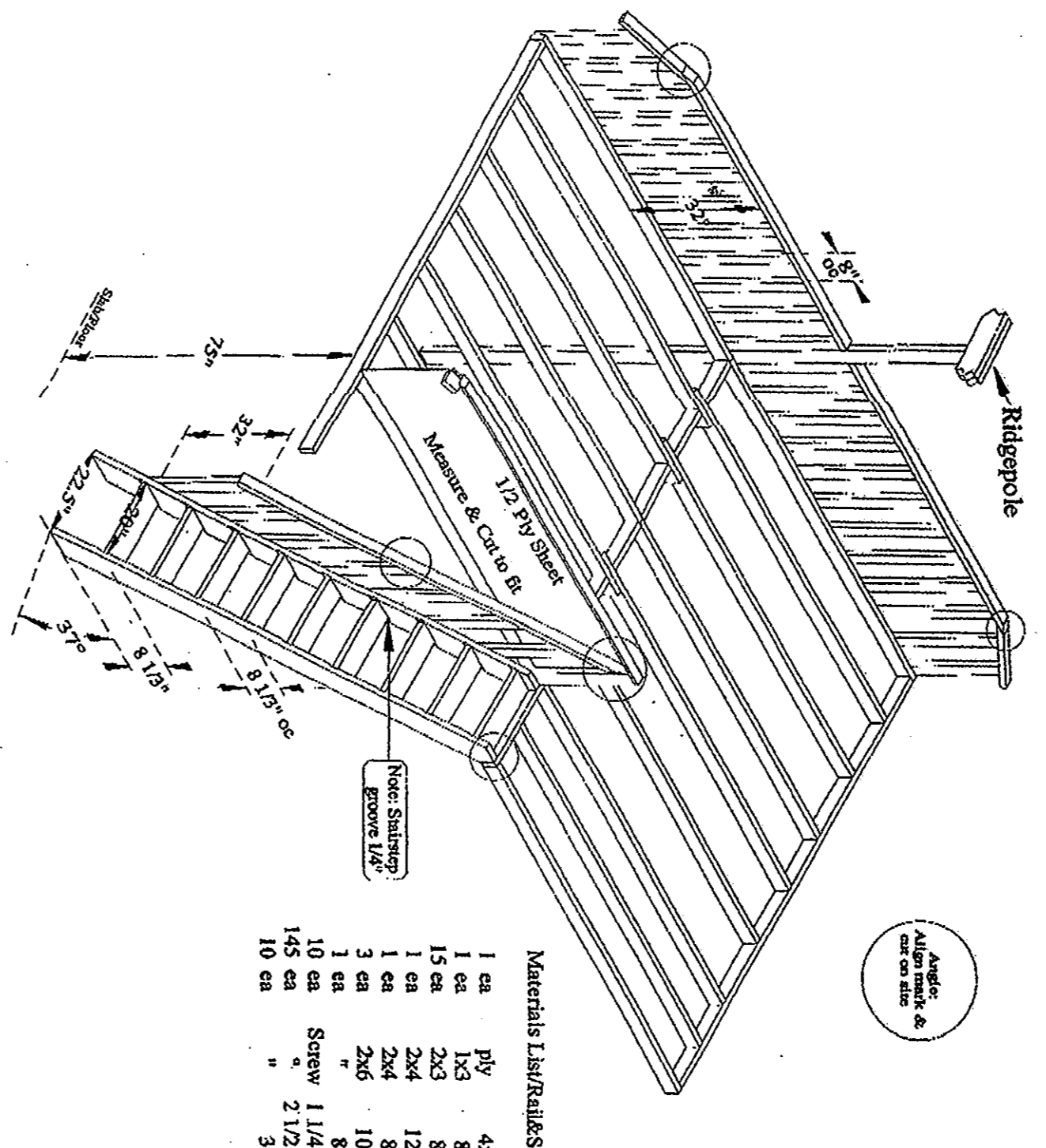


4. ISO LOFT PLAN

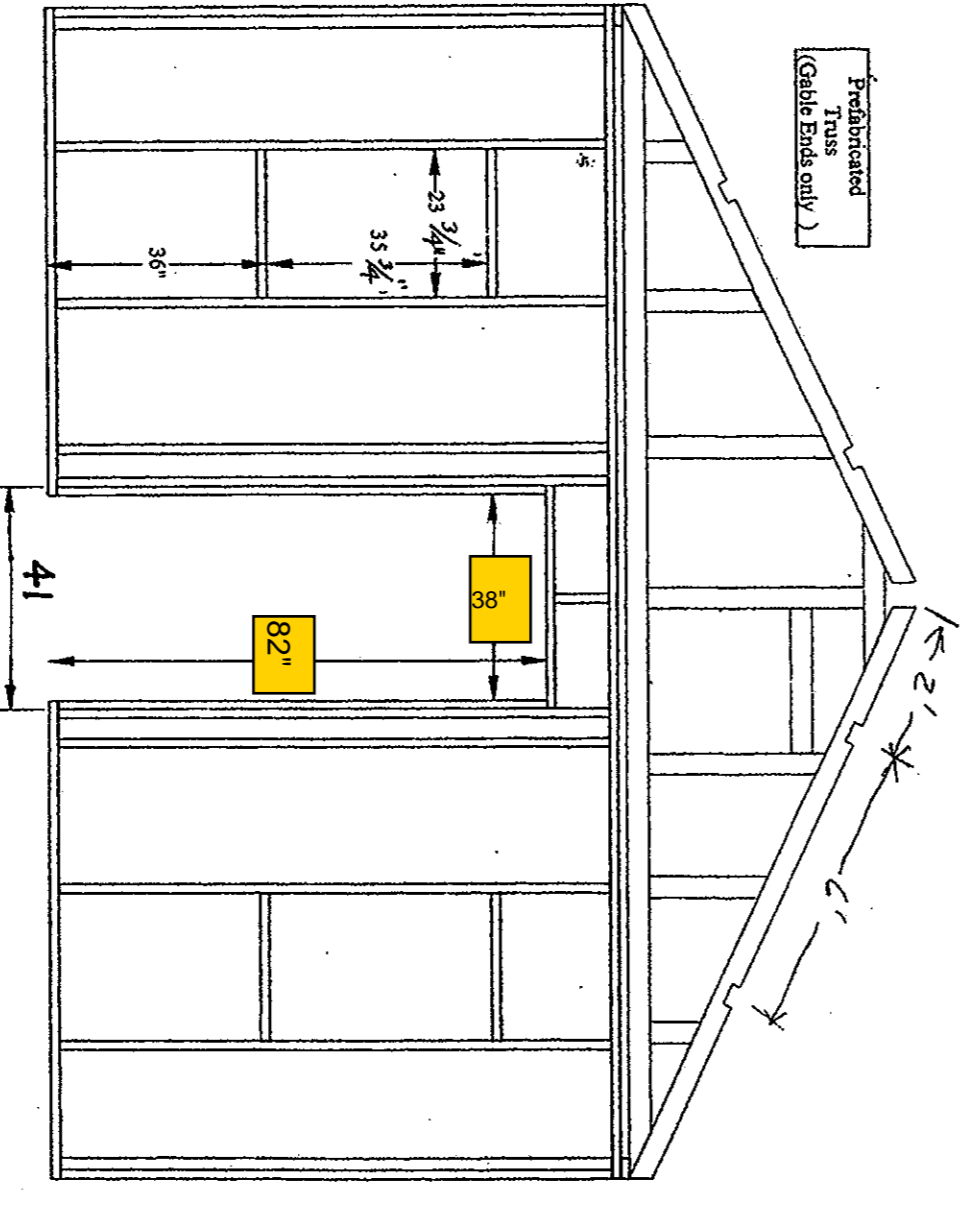
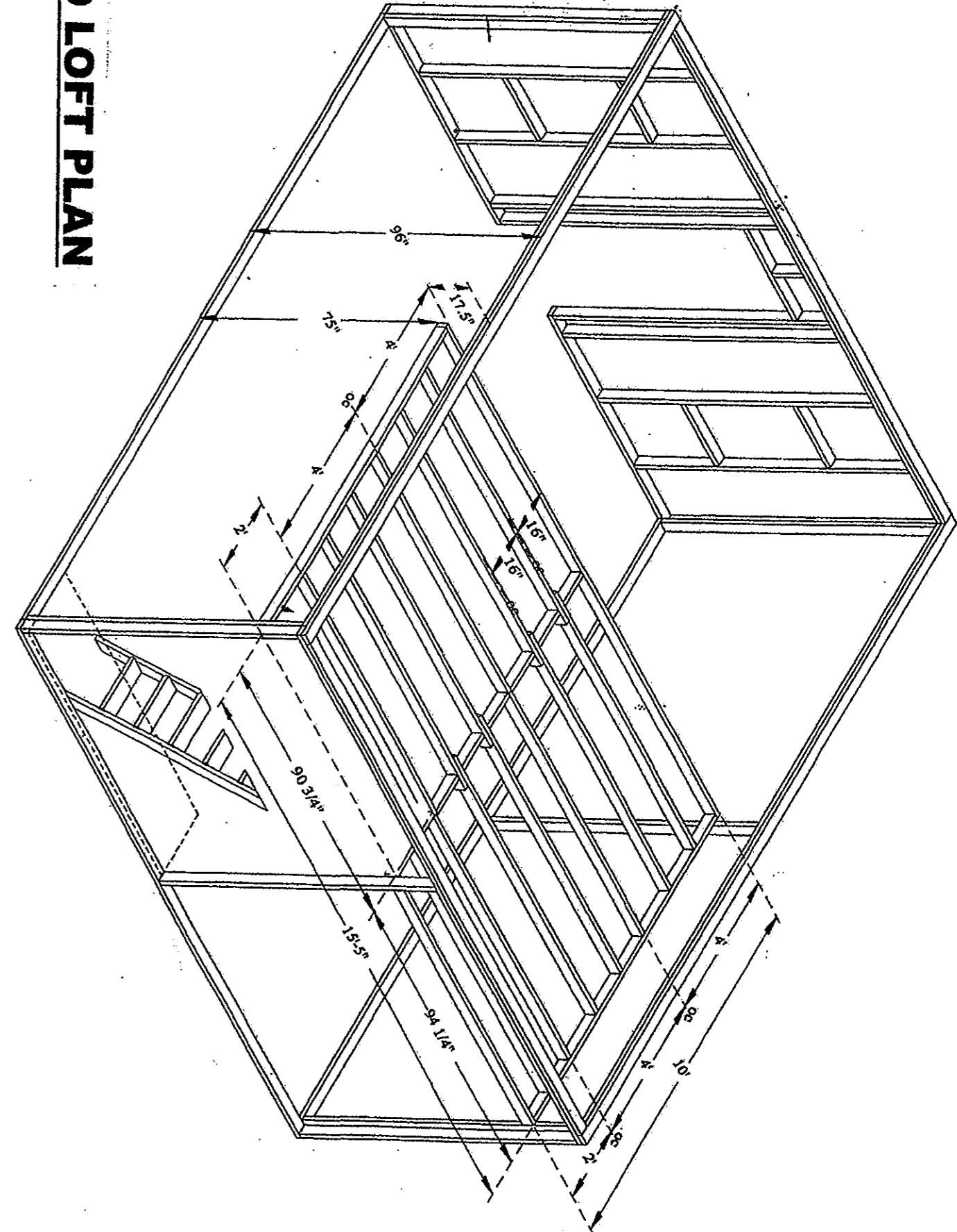


8. LOFT FRAMING PLAN

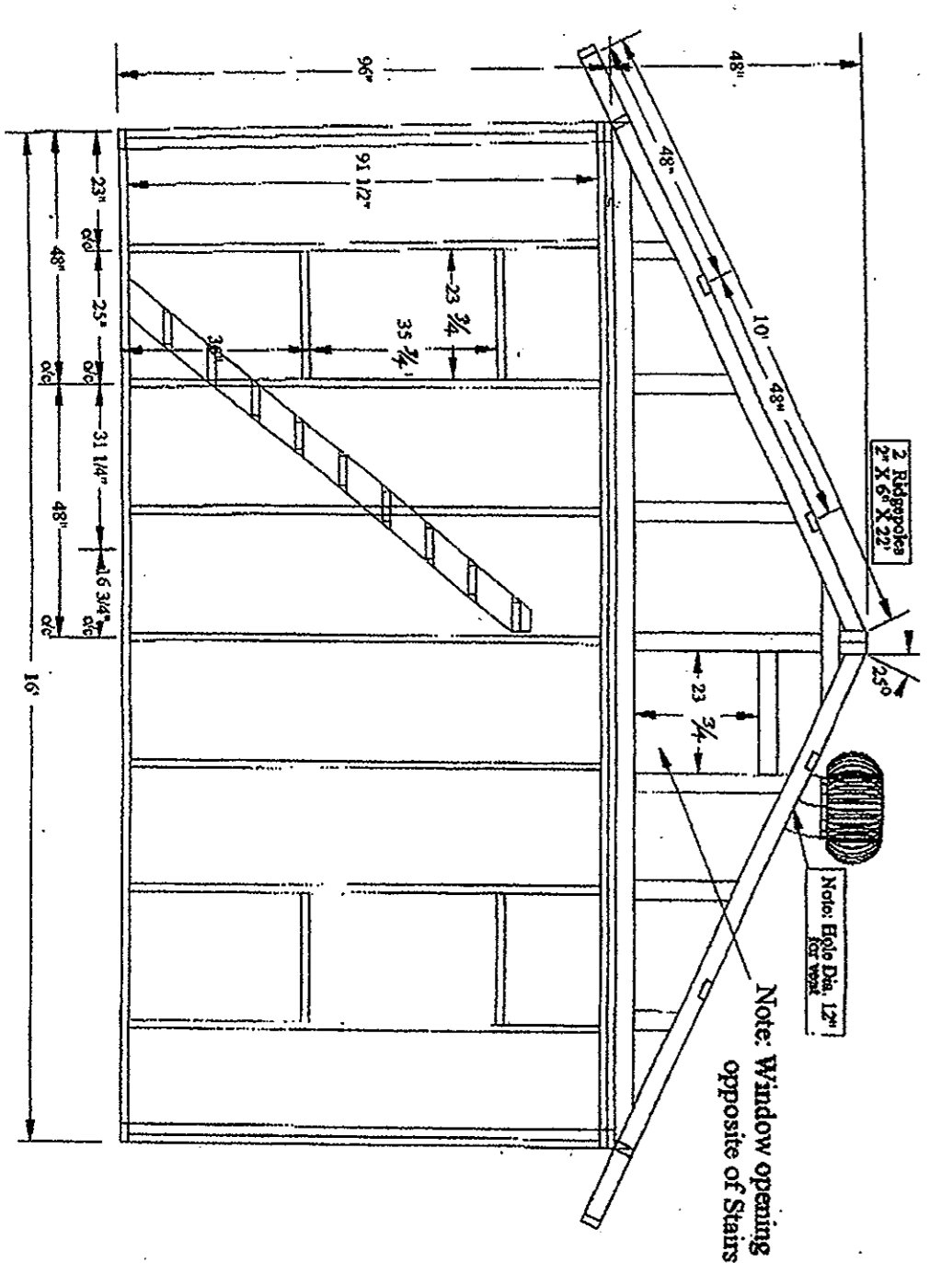
9. GABLE SIDING



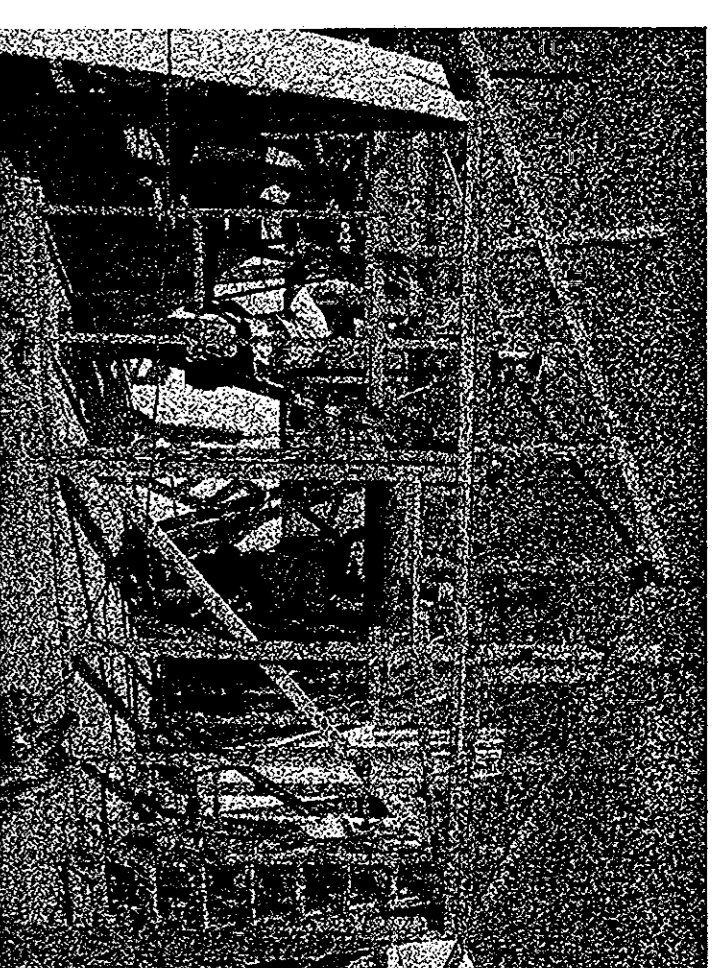
5. ISO STAIR PLAN



6. FRONT ELEVATION



7. REAR ELEVATION



CONSTRUCTION NOTES:

1. Before you frame openings measure doors and windows for tolerances  $\pm 1/4"$  over actual size.
2. Squaring up the slab is one of the most important things for a successful project. Failure to do this will create more work throughout the day. Measure slab for size. Should be 16' x 20' and then on the diagonal to see how square it is. Create a square corner by using the 3, 4, 5 method or better 5, 8 & 10. Measure 6' down one side, 8' down the other and the diagonal should be 10'. Adjust as necessary to find square. Another way is to lay down a square sheet or two of plywood measuring out 4x8' or 8' x 12' and that should tell you how square the slab is.
3. Nailing schedule: Wall and roof sheathing: #8 nails (2 1/2" - 6" on center for borders and 12" on center for the field)
4. Door Hinging: Measure diagonally for square opening. Install doorknob (this helps align the strike plate.) Fit frame into opening and plumb the hinge side. Use shims. Shims can be made by cutting wedges from a 2x4 and tack nail at both hinges to hold into place. Check reveals by closing the door into frame and use shims to adjust and tack nail through frame where shims are fit. Check for cross sight so that door closes at the strike plate as well. Once door is fitted, finish nailing.

TASK CHART

ITEM	DESCRIPTION	QUANTITY	UNIT	REMARKS
1	KEEP LINES NEAR SLAB SURF			
2	MARK ALL MATERIALS			
3	OTHER MATERIALS			
4	5/8" PLY			CHECK FOR SIZE AND SQUARE. STACK TO SIDE & PAINT
5	2X4X8			STACK IN AN OPEN AREA TO LET PAINTED SHEETS DRY
6	2X4X10			MEASURE ON TOP AND CUT TRANSVERS MEASUREMENT BELOW
7	2X4X10			STACK TO SIDE FOR CUTTING LAYER
8	2X4X10			SET UP SLAB SURF OUT
9	PLATES			
10	8 QTY			
11	2X4X10			
12	12 QTY 7/8" (USE CUT OFFS FOR RAFTER BLOCKS 22 1/2")			
13	2 QTY 6" 1/2"			
14	1 QTY 8" 1/2"			
15	8 QTY 2X4X8			
16	18 QTY 1/2" 1/2" ROOF PITCH WITH LENGTH ON			
17	4 QTY 1/2" 1/2" ROOF PITCH WITH LENGTH ON			
18	18 QTY 2 1/2" 1/2" FROM CUT-OFFS			
19	4 QTY 1 1/2"			
20	18 QTY 1 1/2"			
21	18 QTY 1 1/2"			
22	18 QTY 1 1/2"			
23	18 QTY 1 1/2"			
24	18 QTY 1 1/2"			
25	18 QTY 1 1/2"			
26	18 QTY 1 1/2"			
27	18 QTY 1 1/2"			
28	18 QTY 1 1/2"			
29	18 QTY 1 1/2"			
30	18 QTY 1 1/2"			
31	18 QTY 1 1/2"			
32	18 QTY 1 1/2"			
33	18 QTY 1 1/2"			
34	18 QTY 1 1/2"			
35	18 QTY 1 1/2"			
36	18 QTY 1 1/2"			
37	18 QTY 1 1/2"			
38	18 QTY 1 1/2"			
39	18 QTY 1 1/2"			
40	18 QTY 1 1/2"			
41	18 QTY 1 1/2"			
42	18 QTY 1 1/2"			
43	18 QTY 1 1/2"			
44	18 QTY 1 1/2"			
45	18 QTY 1 1/2"			
46	18 QTY 1 1/2"			
47	18 QTY 1 1/2"			
48	18 QTY 1 1/2"			
49	18 QTY 1 1/2"			
50	18 QTY 1 1/2"			
51	18 QTY 1 1/2"			
52	18 QTY 1 1/2"			
53	18 QTY 1 1/2"			
54	18 QTY 1 1/2"			
55	18 QTY 1 1/2"			
56	18 QTY 1 1/2"			
57	18 QTY 1 1/2"			
58	18 QTY 1 1/2"			
59	18 QTY 1 1/2"			
60	18 QTY 1 1/2"			
61	18 QTY 1 1/2"			
62	18 QTY 1 1/2"			
63	18 QTY 1 1/2"			
64	18 QTY 1 1/2"			
65	18 QTY 1 1/2"			
66	18 QTY 1 1/2"			
67	18 QTY 1 1/2"			
68	18 QTY 1 1/2"			
69	18 QTY 1 1/2"			
70	18 QTY 1 1/2"			
71	18 QTY 1 1/2"			
72	18 QTY 1 1/2"			
73	18 QTY 1 1/2"			
74	18 QTY 1 1/2"			
75	18 QTY 1 1/2"			
76	18 QTY 1 1/2"			
77	18 QTY 1 1/2"			
78	18 QTY 1 1/2"			
79	18 QTY 1 1/2"			
80	18 QTY 1 1/2"			
81	18 QTY 1 1/2"			
82	18 QTY 1 1/2"			
83	18 QTY 1 1/2"			
84	18 QTY 1 1/2"			
85	18 QTY 1 1/2"			
86	18 QTY 1 1/2"			
87	18 QTY 1 1/2"			
88	18 QTY 1 1/2"			
89	18 QTY 1 1/2"			
90	18 QTY 1 1/2"			
91	18 QTY 1 1/2"			
92	18 QTY 1 1/2"			
93	18 QTY 1 1/2"			
94	18 QTY 1 1/2"			
95	18 QTY 1 1/2"			
96	18 QTY 1 1/2"			
97	18 QTY 1 1/2"			
98	18 QTY 1 1/2"			
99	18 QTY 1 1/2"			
100	18 QTY 1 1/2"			

THESE DRAWINGS AND SPECIFICATIONS ARE THE PROPERTY AND COPYRIGHT OF WARE MALCOMB AND SHALL NOT BE USED ON ANY OTHER WORK EXCEPT BY AGREEMENT WITH WARE MALCOMB. WRITTEN DIMENSIONS SHALL TAKE PREFERENCE OVER SCALED DIMENSIONS AND SHALL BE VERIFIED ON THE JOB SITE. ANY DISCREPANCY SHALL BE BROUGHT TO THE NOTICE OF WARE MALCOMB PRIOR TO THE COMMENCEMENT OF ANY WORK.

DATE	REMARKS	DATE	REMARKS

BAJA CHALLENGE - 2008  
TIJUANA, MEXICO

architecture  
planning  
interiors  
graphics  
site development

WARE MALCOMB  
Leading Design for Commercial Real Estate

6363 greenwich dr. ste. 175  
san diego, california 92122  
p 858.638.7277  
f 858.638.7506